

Robert Treat Center

FIFTY PARK PLACE

NEWARK, NEW JERSEY



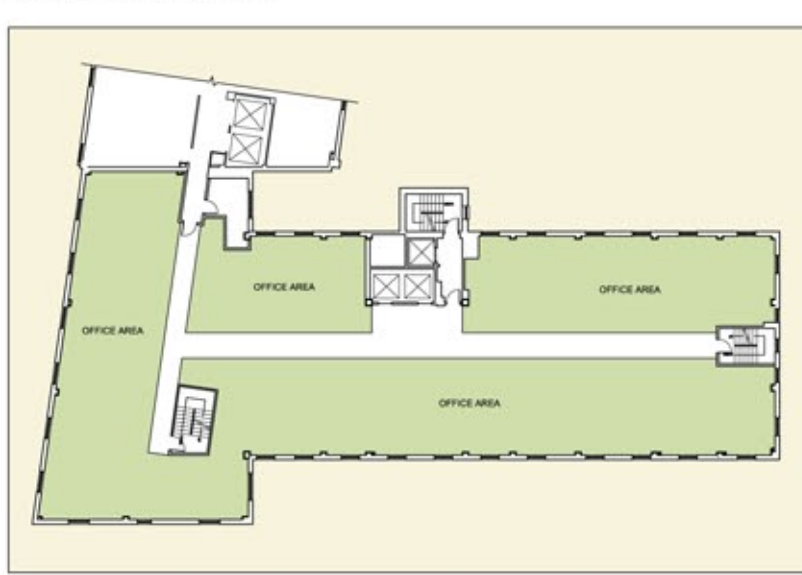
Robert Treat Center

Outstanding Location and Value in Newark's Central Business District

Located in the heart of Newark's bustling central business district, and across the street from Prudential's brand new downtown office campus, Robert Treat Center offers modernized accommodations, state-of-the-art building systems, high-speed connectivity, and responsive operation by The Berger Organization, the city's most respected owner/managers. Tenants benefit from access to the first-class amenities at adjacent Robert Treat Hotel, including casual dining, high-tech meeting and conference facilities, a full fitness center, picturesque roof garden and beautifully appointed guest accommodations. Additionally, they enjoy all the advantages of Newark's exciting 24/7 urban setting and robust transportation network.

Typical Floor: 8,000 sf

Units as small as 1,200 sf



INCENTIVES

Qualified tenants at Robert Treat Center can benefit from New Jersey's deep pool of business incentive and financing opportunities.

- NEW Grow New Jersey Assistance Program (Grow NJ) Provides tax-credit grants for job creation/retention
- Urban Enterprise Zone Program (UEZ) Offers tax and other financial incentives to spur business and local economic growth

For a full list of state incentive programs and more information, visit njeda.com.



Tenants enjoy full access to state-of-the-art fitness center in the Robert Treat Hotel



Robert Treat Center Features and Amenities

Facts:

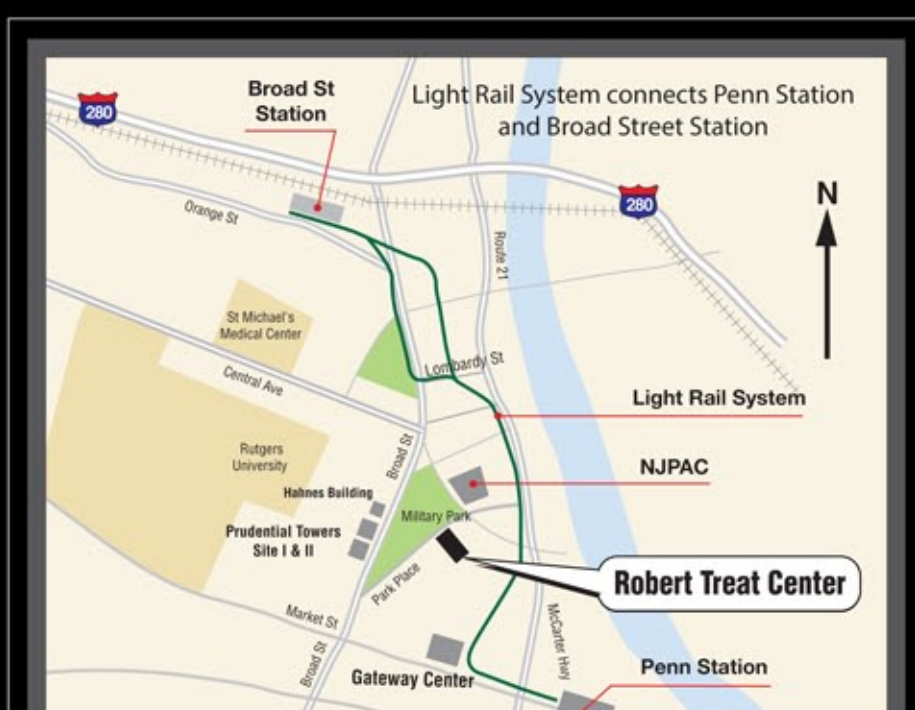
- Size: 100,000 sq.ft.
- Stories: 15
- Typical floor plate: 8,000 sq.ft.
- Available Space: Units from 1,200 sq.ft.
- Tenant build-out: To Suit
- On site fitness center
- Access: 24/7, with 24-hour security
- Staff parking: 1 space per thousand
- Management: On site
- Visitor parking: 800 car underground attended garage connected to Robert Treat Center

Location:

- Robert Treat Center sits in the heart of Newark's cultural, dining, entertainment and educational hub.
- Directly across the street from Prudential Insurance Company
 - Steps from the New Jersey Performing Arts Center
 - One block to Newark Light Rail
 - Proximate to the Newark campuses of Rutgers, NJIT and Seton Hall
 - Surrounded by all new neighborhood retail and restaurants

Transportation:

- The property offers outstanding accessibility to the City's unparalleled transportation network.
- Steps from the New Jersey Light Rail
 - Two blocks from Newark Penn Station, providing:
 - 14-minute service to Midtown Manhattan via NJ Transit Trains
 - PATH service to the Lower West Side and Financial District
 - Amtrak Northeast Corridor service
 - Loop bus service to and from Penn Station
 - Nearby surface and garage parking
 - Easy access to major thoroughfares
 - Minutes from Newark Liberty International Airport



Located in Newark's finest business district and close to all major attractions



ROBERT TREAT CENTER
FIFTY PARK PLACE
NEWARK, NEW JERSEY 07102

NewarkOfficeSpace

973-623-3300. Leasing@newarkofficespace.com



NewarkOfficeSpace.com